

Counter Installation Guide

Part 1 : Pre Installation Checklist

WHAT'S INCLUDED IN THE BOX

- 1x 3D counter
- 1x PoE midspan
- 1x 1 meter Cat5 network cable
- 4x screws with wing bolt washer
- 4x RJ45 plugs

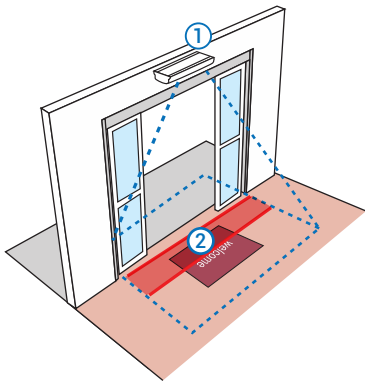
NEED TO BE AVAILABLE ON SITE

- 1x spare main power socket.
- 1x free port on network router.

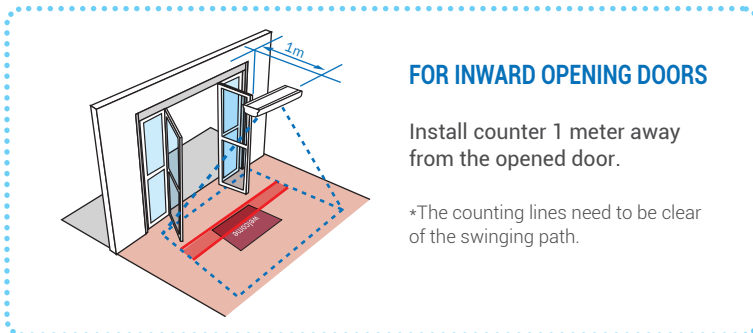
WHAT'S INSTALLER NEED TO PREPARE

- Cat5 network cable: length required based on distance between router and counter destination.
- RJ45 crimp tool for terminating Cat5 network cable.
- Screw drivers, drill and ladder (if applicable)

Part 2 : Counter Positioning



- ① Middle of entrance
- ② Look perpendicular down
- ③ Avoid inward opening door

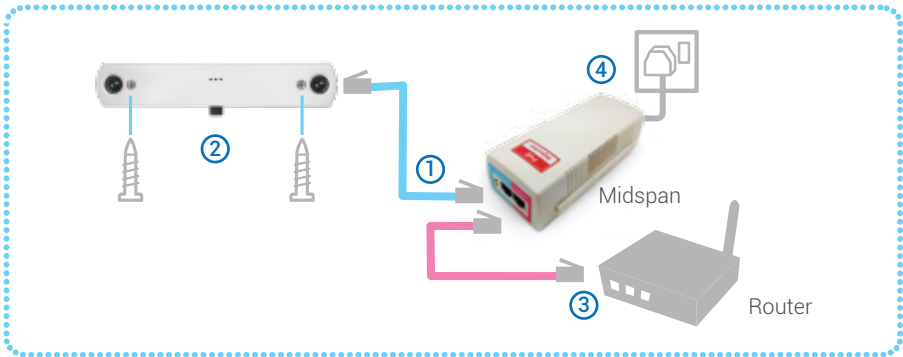


FOR INWARD OPENING DOORS

Install counter 1 meter away from the opened door.

*The counting lines need to be clear of the swinging path.

Part 3 : Wiring Diagram



STEP 1 CONNECT TO MIDSPAN

Run 1x Cat5e network cable from the counter to midspan

STEP 2 CONNECT TO COUNTER

Plug in the counter and secure it onto the ceiling with 2x screws

* A drill template is provided for you to mark the screws position before drilling.

STEP 3 CONNECT TO ROUTER

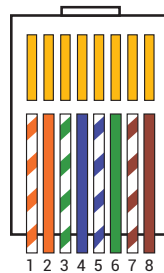
Connect another Cat5 network cable between the midspan (To Router) and router.

STEP 4 POWER ON

Connect the midspan and turn on power plug.

Crimp Network Cable Plugs

The Color code of ethernet cable MUST only follow the T568B Standard to terminate.

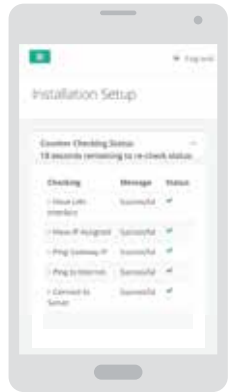
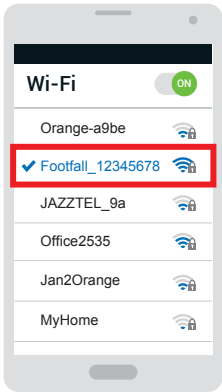


IMPORTANT!

Without following the colour code ordering, it may caused cross talk interference.

Pin	Wire Color	Wire Diagram
1	White - Orange	
2	Orange	
3	White - Green	
4	Blue	
5	White - Blue	
6	Green	
7	White - Brown	
8	Brown	

Part 4 : Check Connection



Step 1 Connect to WiFi SSID

Go to the list of available WiFi network on your device, select the counters specific SSID e.g **Footfall_12345678** and connect with its password: **ffcam888**

Step 2 Login to Control Panel

Go to the browser on your drive and type in the URL **http://192.168.4.1** and password: **123456**

Step 3 Quick Setup Wizard

Installation wizard will auto checking for counter heartbeat. Fill in the IT details to complete the installation and IT setup.

Part 5 : LED Light Indications



	Lights Indication	Message
○ NO COLOR	No Power	Unable connect to power cable. (Check the POE injector power switch and reboot counter).
● RED	Programme Issue	Contact FootfallCam for further diagnose.
● ORANGE	Internet Connection Issue	Check network cable (Is it crimped properly?) Recrimp network cable and check internet connection. Contact your IT support.
	Firewall blocked	Allow port 80 (http) for data send to the central server or consult to your IT department.
● YELLOW	Gateway Issue	Can obtain IP but no gateway. Consult to your IT department.
● MAGENTA	Server Issue	Check server IP address in system page or consult to your IT department.
● BLUE	Everything OK	—

When powering up, light status shown: ● Flashing GREEN > ● RED > ● Flashing GREEN > ● BLUE