



FootfallCam Staff Exclusion Tag

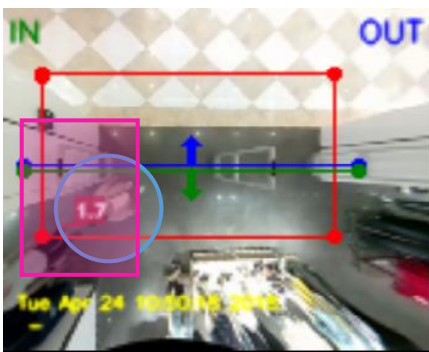
FC-SE01

The FootfallCam Staff Exclusion Tag will allow users to exclude the counting of staff in their footfall data. The staff exclusion tag comes with an additional peripheral attached to the FootfallCam internal chipset accompanied by a remote button which is the tag.

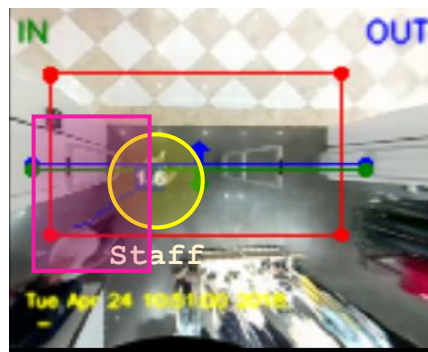
Key Specifications

Compatible with	FootfallCam 3D Plus™
Weight	0.12 kg
Material	Plexiglass
Resistances	Water proof and fire proof
Power output	DC12 V
Sensor	Inductive proximity sensor
Size (WxLxH)	86mmx13mmx86mm
Included	Remote button

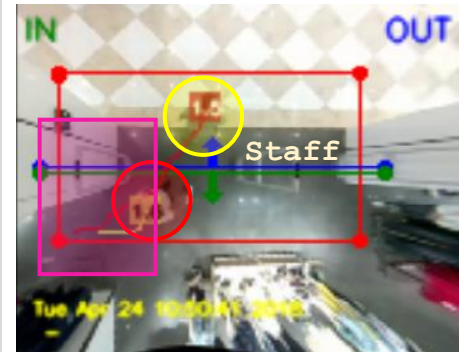
How does it work?



Step 1: Staff will press the staff exclusion remote button within the exclusion zone.

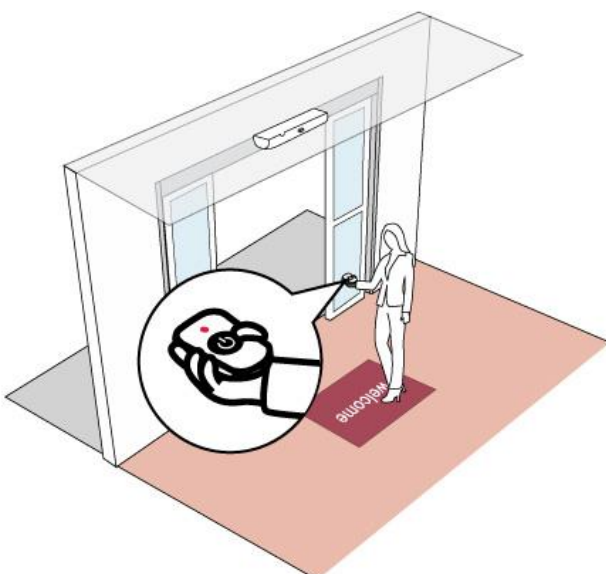


Step 2: The staff will automatically be detected as a staff.



Step 3: The staff can proceed to walking through the entrance as normal.

How to install?



The FootfallCam Staff Exclusion Tag comes with an external peripheral that is built in to the internal chipset of the FootfallCam 3D Plus™ SE. It is to be installed as any normal FootfallCam counter.

The staff exclusion button will be installed at the entrance side of every door way to be easily accessible by staff. This kit may be purchased as a supplementary add on to the FootfallCam 3D Plus™.